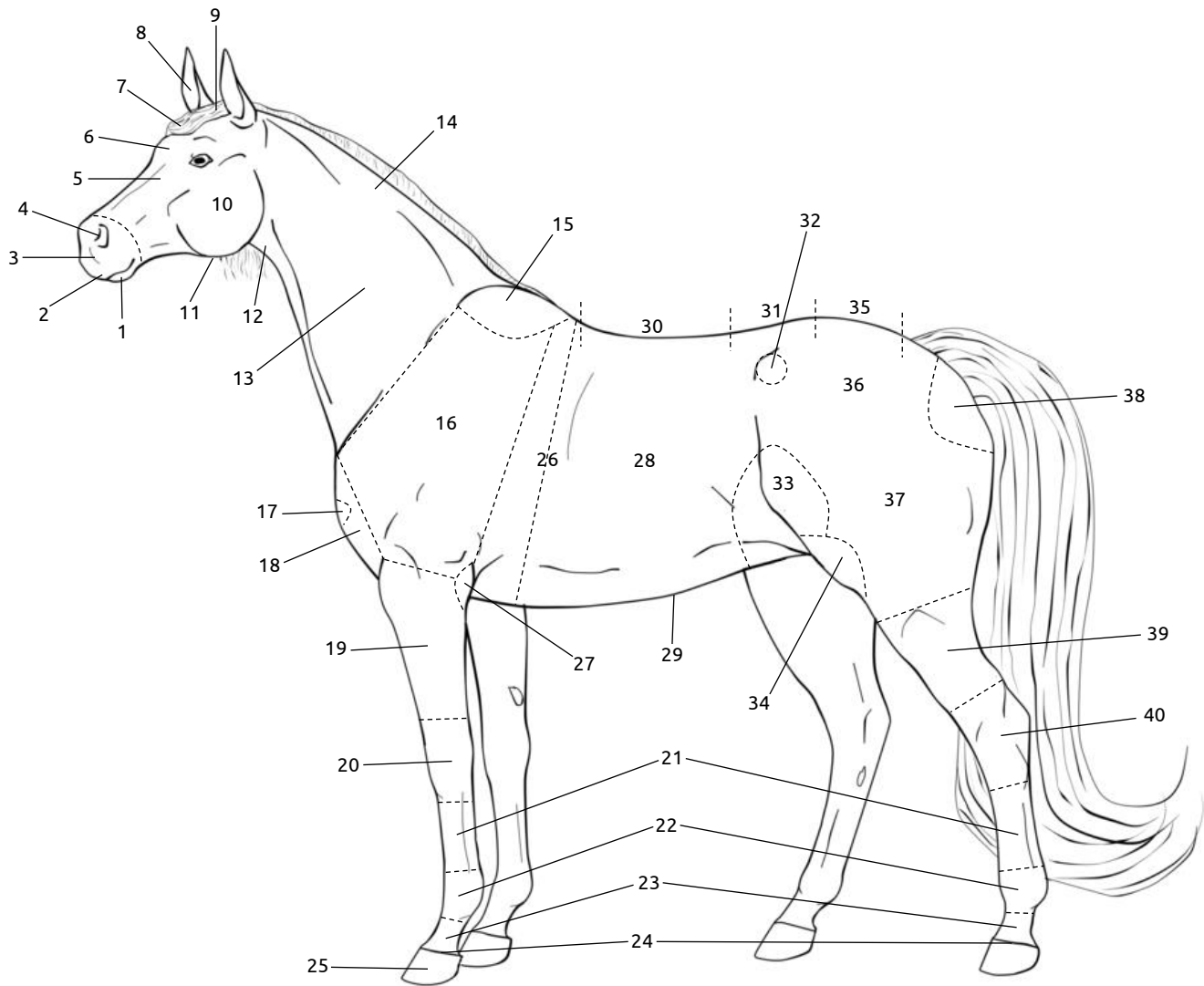


# Equestrian Competition

## Horse Part Identification



Athletes are required to identify 9 total horse parts. Competition is broken down into 3 rounds. In each round, 3 horse parts are chosen for identification. Horse parts will be chosen randomly.



1. Lower Lip
2. Upper Lip
3. Muzzle
4. Nostril
5. Face
6. Forehead
7. Forelock
8. Ear
9. Poll
10. Cheek

11. Jaw
12. Throatlatch
13. Neck
14. Crest
15. Withers
16. Shoulder
17. Point of Shoulder
18. Chest
19. Forearm
20. Knee

21. Cannon
22. Fetlock Joint
23. Pastern
24. Coronet
25. Hoof
26. Heart Girth
27. Elbow
28. Ribs
29. Underline
30. Back

31. Loin
32. Point of Hip
33. Flank
34. Stifle
35. Croup
36. Hind Quarters
37. Thigh
38. Point of Buttock
39. Gaskin
40. Hock