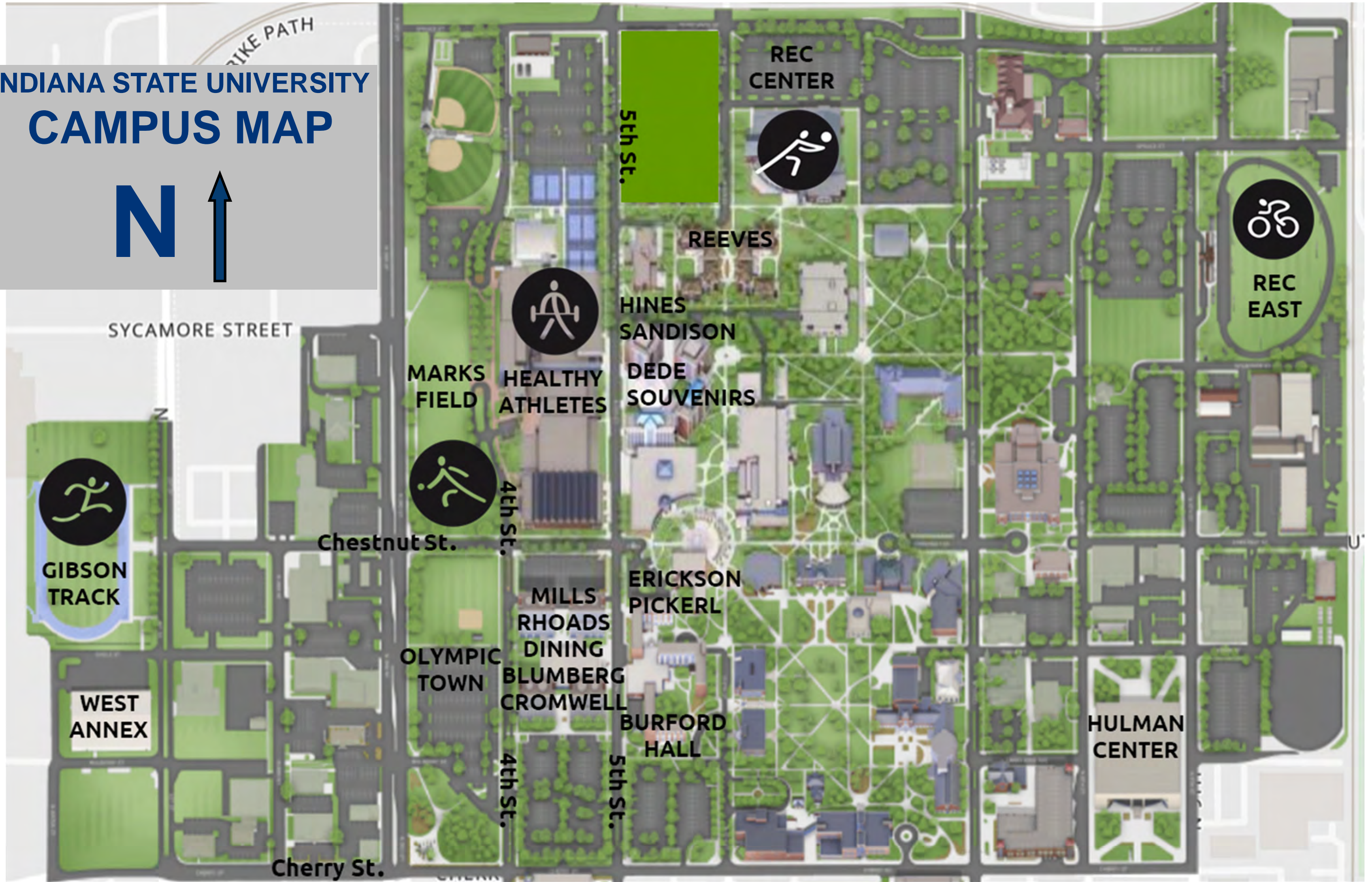


# INDIANA STATE UNIVERSITY CAMPUS MAP





# INDIANA STATE UNIVERSITY PARKING MAP



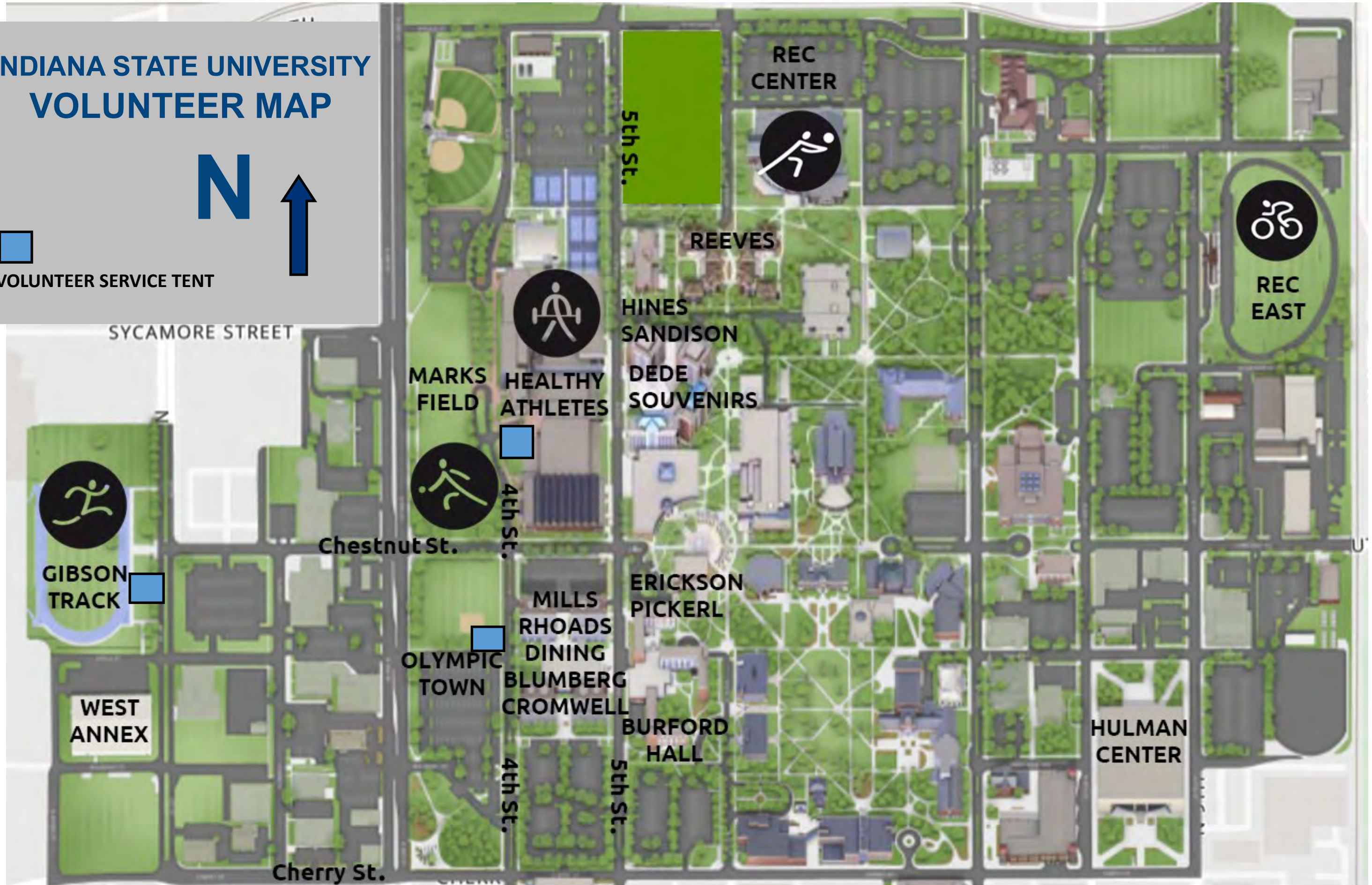


# INDIANA STATE UNIVERSITY VOLUNTEER MAP

N



VOLUNTEER SERVICE TENT





# CAMPUS MAP

SRC LOT **P**

APARTMENTS EAST

APARTMENTS WEST

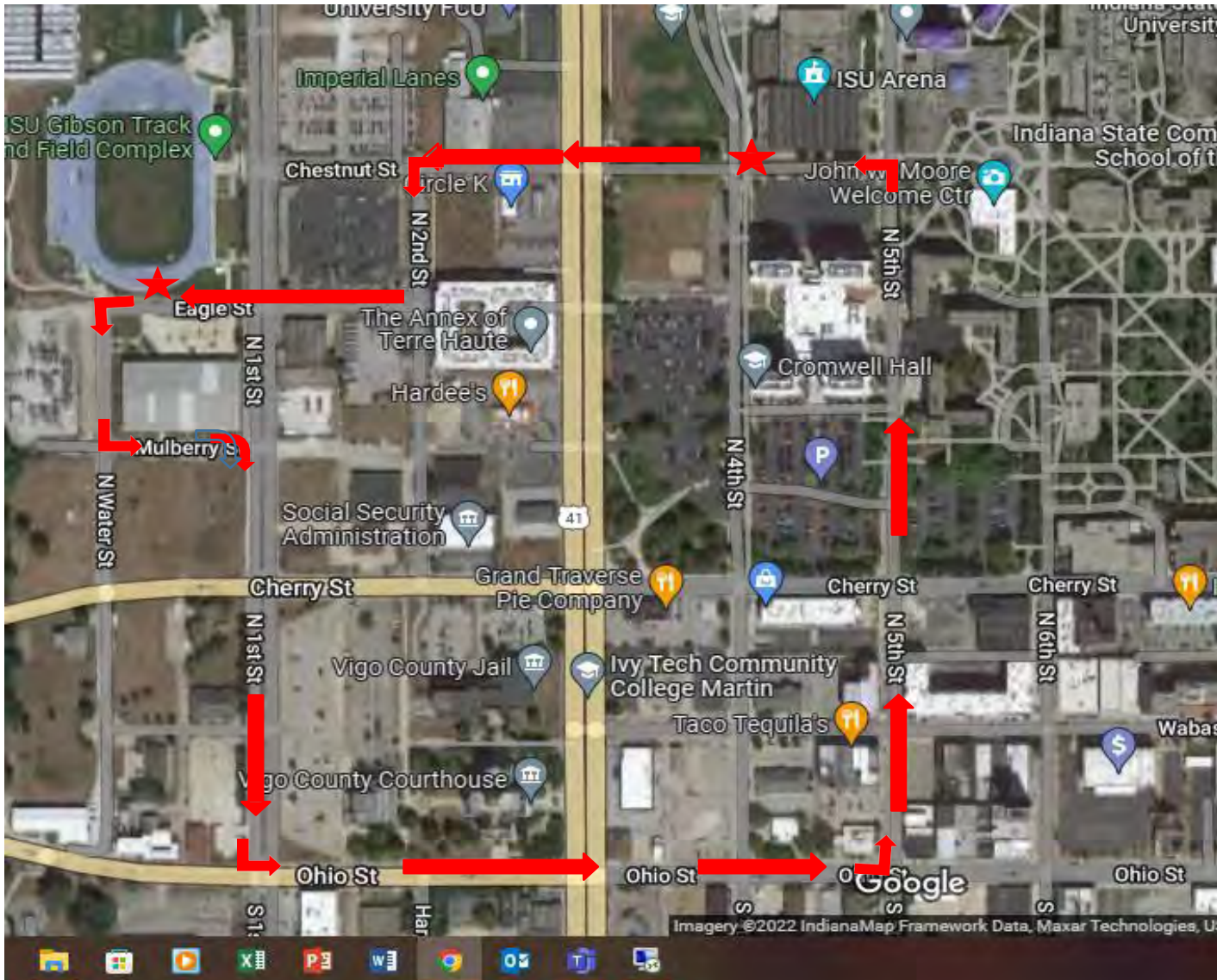


**P** COOK LOT

PERCOPO



# RED ROUTE MAP



## MAIN CAMPUS TO TRACK

From the stop/pickup point at Chestnut & 4<sup>th</sup> street, go west across 41/3<sup>rd</sup> St to N 2<sup>nd</sup> street.

Turn Left on N 2<sup>nd</sup> street

Turn RIGHT on Eagle Street

Bus will stop on Eagle south of the track with the door opening to sidewalk.

Turn LEFT on Water street

Turn LEFT on Mulberry street

Turn RIGHT on 1<sup>st</sup> street

Turn LEFT on Ohio St

Turn LEFT on 5<sup>th</sup> St

Turn LEFT on Chestnut

# PURPLE ROUTE MAP



## Start on S.5th St.

- Take S 5<sup>th</sup> St. to Jones Hall  
*(Jones Hall is your stop - look for purple tent)*
- Turn RIGHT on Spruce and then left on 6<sup>th</sup> St.
- Stopping here to drop off only at Student Rec Center Lot (Drop off only volleyball/NO pickup)
- Turn RIGHT on Tippecanoe
- Turn RIGHT on S 8<sup>th</sup> St.
- Turn LEFT on Poplar St.
- Turn LEFT on N 9<sup>th</sup> St.  
*(Drop at Vigo Bowl at the main entrance)*
- Turn LEFT on Cherry St.
- Turn RIGHT on S 5<sup>th</sup> St. to return to Jones Hall.



# BLUE ROUTE MAP (ISU)

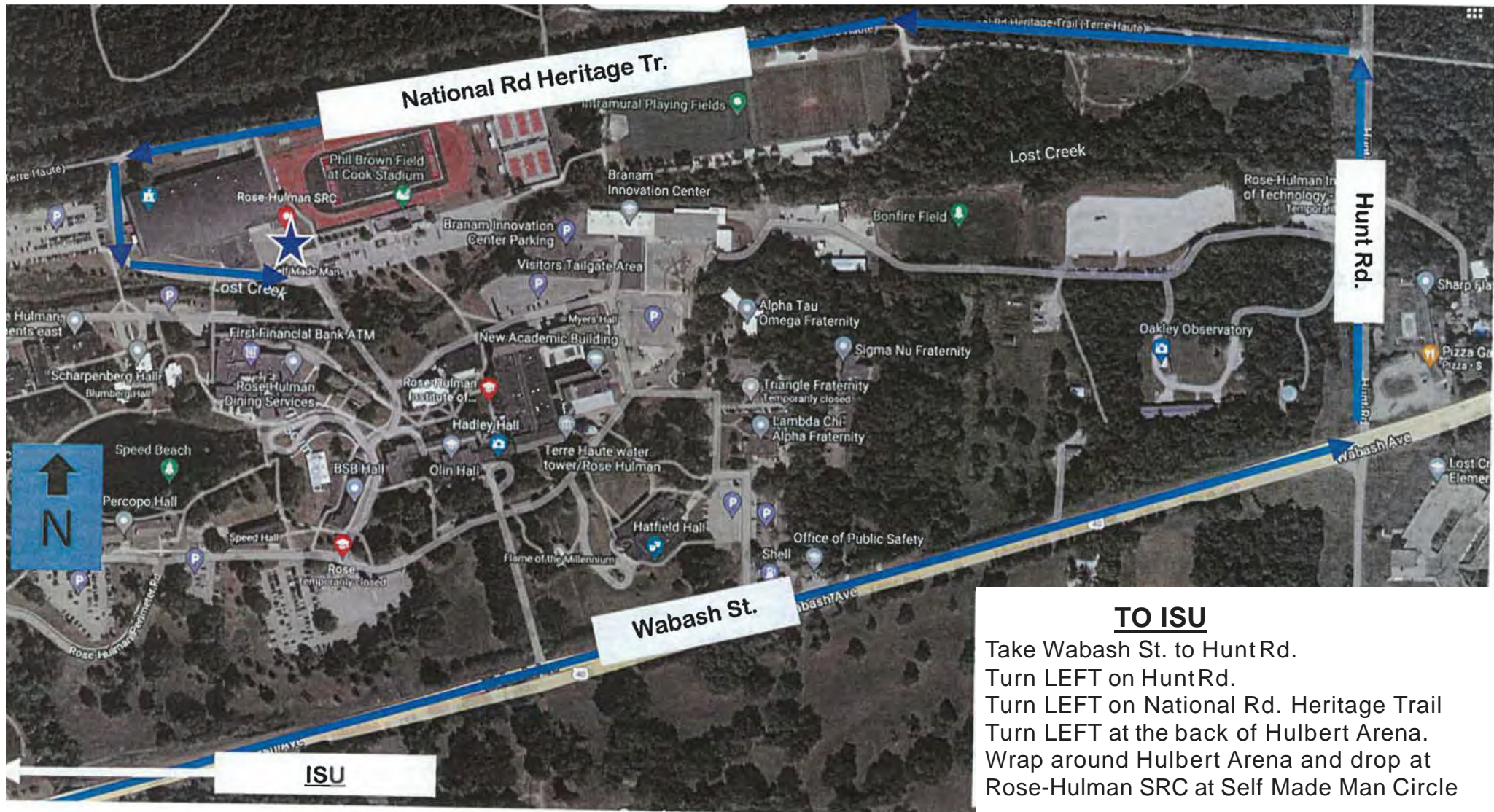
## TO ROSE HULMAN

Take S 5<sup>th</sup> St. to Chestnut St.  
*(Pick up off of S 5<sup>th</sup> and Chestnut- Look for the Blue Tent)*  
Turn RIGHT on Tippecanoe St.  
Turn RIGHT on S 8<sup>th</sup> St.  
Turn LEFT on Wabash St. out to Rose  
Hulman  
*(head out to Rose Hu/man)*





# BLUE ROUTE MAP (ROSE-HULMAN)



**TO ISU**  
Take Wabash St. to Hunt Rd.  
Turn LEFT on Hunt Rd.  
Turn LEFT on National Rd. Heritage Trail  
Turn LEFT at the back of Hulbert Arena.  
Wrap around Hulbert Arena and drop at  
Rose-Hulman SRC at Self Made Man Circle