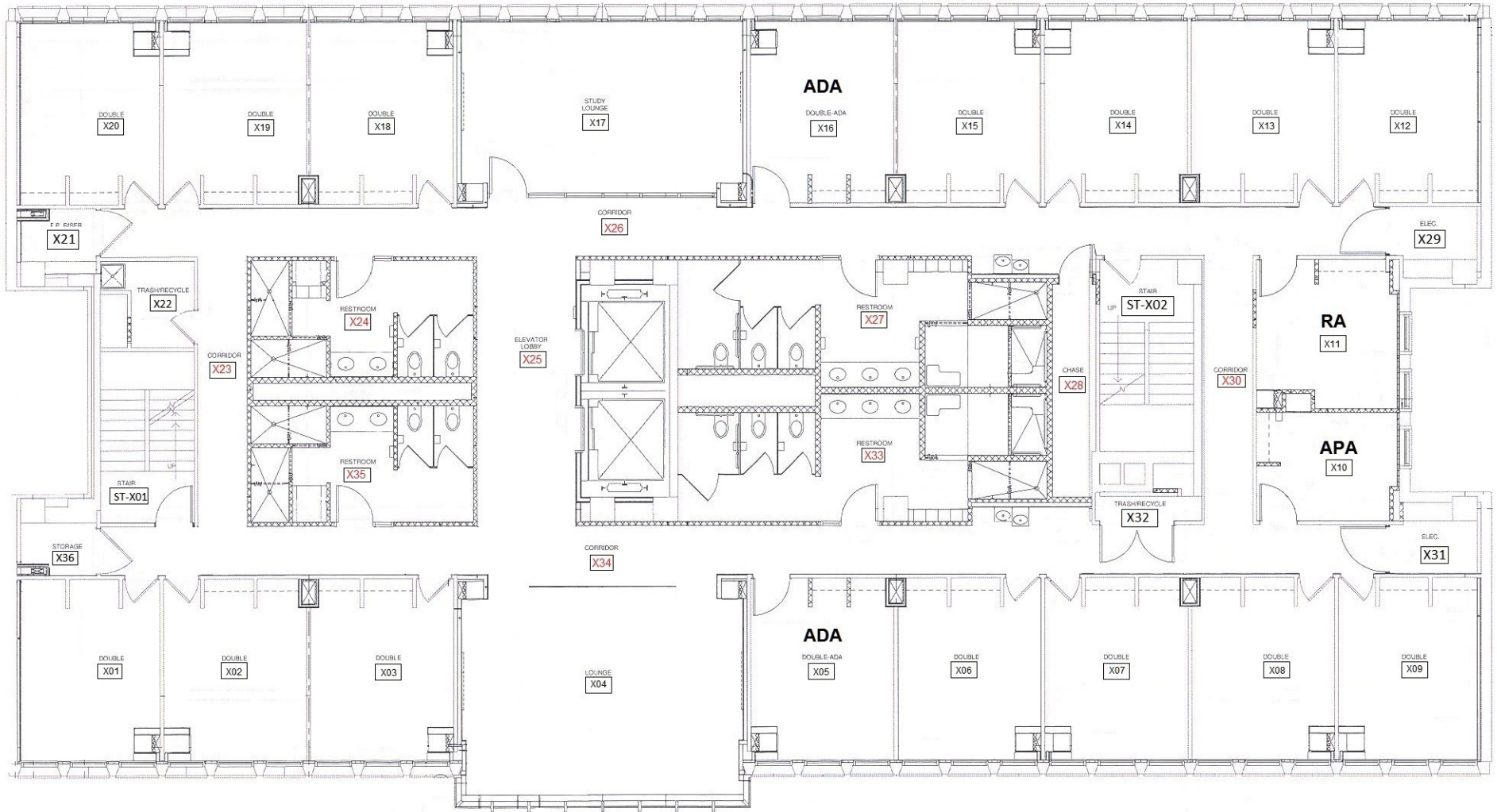


BLACK NUMBERS = POSTED

RED NUMBERS = NOT POSTED



LEVELS 2 thru 6 & 8 thru 12 BLUMBERG HALL

10-AUG-2015

"10" and "11" rooms on floors 2-6 & 8-12 are single rooms
"04" & "17" are lounges on floors 2-6 & 8-12