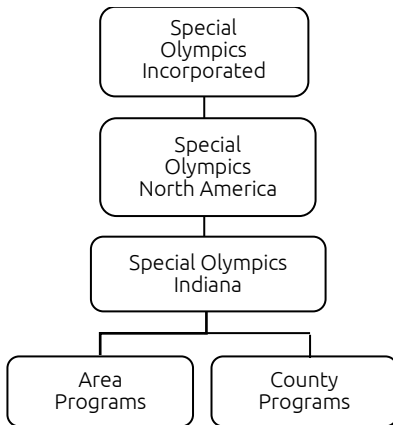
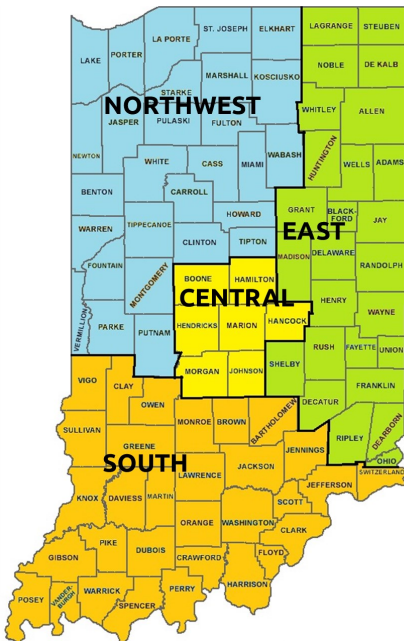


ORGANIZATION

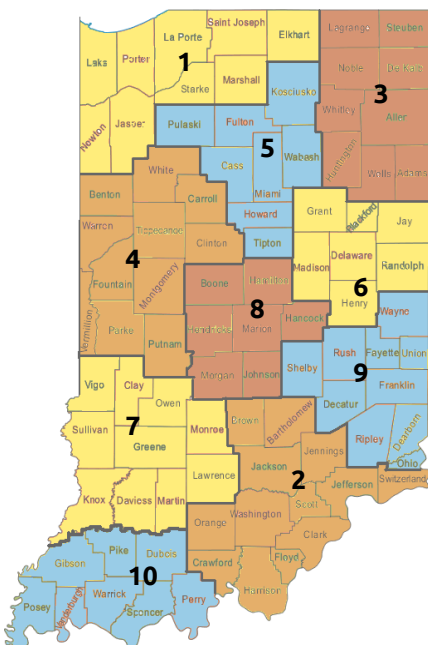
ORGANIZATION CHART



REGIONAL MAP



AREA MAP



SPECIAL OLYMPICS INCORPORATED (SOI)

Founded by Eunice Kennedy Shriver, SOI is the international governing body of the Special Olympics movement. SOI is based in Washington D.C. and provides the official Special Olympics rules and policies, as well as coordinating global initiatives and competitions.

SPECIAL OLYMPICS INDIANA (SO Indiana)

Based in Indianapolis, SO Indiana is accredited to conduct all aspects of the program in the state. In addition to conducting an annual schedule of competition events, the State Office manages fundraising, public relations, coaches training, volunteer registration, Area & County Programs, outreach, and general administration.

REGIONAL MANAGERS

Regional Managers lead SO Indiana's efforts to increase participation and improve the athlete experience. Growth and quality improvement are accomplished by the development of new County Programs, cultivation and support of existing County Program efforts, and training volunteers who have the biggest impact on the athlete experience. Regional Managers oversee an accreditation process for Area and County Programs that serve as the framework for development of annual plans customized by locality – but with focus on recruitment of new athletes and development of the capacity to support quality growth.

AREA PROGRAMS

Ten geographic subdivisions of Indiana consisting of seven (7) to 13 counties, Areas are responsible for conducting competitions, Polar Plunges, and support of County Programs. Each Area is run by a committee of volunteers known as the Area Management Team. The Area Director and Area Competition Director oversee the Area Program, which includes regular coaches meetings, sectional competitions, and at least one bowling tournament and one track & field meet each year.

COUNTY PROGRAMS

County Programs have a committee of volunteers responsible for making a year-round program of sports training and competition available to all eligible athletes within its boundaries. Though usually consisting of one county, some county programs may consist of two (2) or three (3) counties in rural areas or a portion of a county in urban areas. The County Coordinator is the person appointed to oversee the operation of a SO Indiana program.

Persons seeking to recruit and train athletes for Special Olympics competition must submit a *Change of Area/County Leadership Form* to the State Office. Applications are accepted year-round. The *Change of Area/County Leadership Form* is located on online version at www.soindiana.org.

With the appointment of a new County Coordinator or new Treasurer, a new *Change of Area/County Leadership Form* must be submitted to the State Office.

The President & CEO of SO Indiana must sign ALL applications, agreements, and permits involving contractual or other financial obligations, including for purchase, leasing, or rental of services or facilities.

If a program ceases to exist, the County Coordinator is responsible for returning all assets (funds and capital) to the State Office. Assets may be redistributed to the Area or held until a new county organization is formed.

COUNTY ONLY POLICY

The only Programs that can register, train, and enter athletes in SO Indiana competition are County Programs. Local Teams must register, train, and enter athletes for SO Indiana competition through a County Program. Local Teams are any school, workshop, group home or family that provides Special Olympics training for its members (students, clients, employees, family member).

FACT SHEET

VISION

Sports will open hearts and minds towards people with intellectual disabilities and create inclusive communities across the state.

MISSION

Special Olympics provides year round sports training and athletic competition in a variety of Olympic-type sports for children and adults with intellectual disabilities giving them continuing opportunities to develop physical fitness, demonstrate courage, experience joy and participate in a sharing of gifts, skills and friendships with their families, other Special Olympics athletes and the community.

HISTORY

The first International Special Olympics Games, organized by Eunice Kennedy Shriver and the Chicago Park District, were held at Soldier Field (Chicago) in 1968. Indiana's involvement began with those first Games.

PARTICIPATION

In 2019, 18,167 children and adults in Indiana trained and competed through County Programs and school programs. To be eligible to compete in Special Olympics, an individual must be eight (8) years of age or older AND have been identified by an agency or professional as having an intellectual disability OR closely related developmental disability. For those under age eight (8), the Unified Champion Schools program is available.

OUTREACH

Involving more athletes in Special Olympics is the goal of this worldwide effort. Indiana is focusing on the development of community-based programs in each Indiana county and the Unified Champion Schools and Champions Together Unified Sports programs to increase the number of athletes.

VOLUNTEERS

SO Indiana is an organization that is run almost entirely by volunteers. More than 10,000 volunteers provide the help needed to offer the sports training and competition programs.

SUPPORT

SO Indiana is a nonprofit organization funded through private donations and fundraising projects across the state.

SCHEDULE

SO Indiana athletes train year-round to compete in a variety of local, area, state, national and world competitions. Five (5) state competitions per year highlight this seasonal schedule. Every two (2) years Special Olympics Indiana sends a well-trained team to compete in the Special Olympics World Games. These World events alternate between winter and summer sports. In addition, every four (4) years Team Indiana competes in the Special Olympics USA Games.

PROGRAMS

Special Olympics provides a variety of competition opportunities for athletes of all abilities by offering official events of various degrees of difficulty and challenge. Most Special Olympics events have few differences from the sport played by individuals without disabilities.

- Athlete Leadership
- Community Programs - our Area and County Programs
- Unified Champions Schools
 - Young Champions
 - Champions Together in the Middle
 - Champions Together
 - Collegiate Champions
- Unified Fitness Clubs
- Unified Sports®

OFFICIAL SPECIAL OLYMPICS SPORTS

Alpine Skiing*	Figure Skating*+	Kayaking	Swimming*
Badminton	Flag Football*	Motor Activities	Table Tennis
Basketball*	Floor Hockey	Netball	Tennis*+
Bocce*	Floorball	Open Water Swimming	Track & Field*
Bowling*	Football (Soccer)*	Powerlifting*	Triathlon*+
Cricket	Golf*	Roller Skating	Volleyball*
Corn Toss*	Gymnastics*+	Sailing	
Cross Country Skiing	Rhythmic Gymnastics	Snowboarding*	* Sports offered in Indiana.
Cycling*	Handball	Snowshoeing*	+ Local sports only.
Dancesport	Horseshoes*	Softball*	
Equestrian*	Judo	Speed Skating*+	