



# Organization

## SPECIAL OLYMPICS INCORPORATED (SOI)

Founded by Eunice Kennedy Shriver, SOI is the international governing body of the Special Olympics movement. SOI is based in Washington D.C. and provides the official Special Olympics rules and policies, as well as coordinating global initiatives and competitions.

## SPECIAL OLYMPICS INDIANA (SO Indiana)

Based in Indianapolis, SO Indiana is accredited to conduct all aspects of the program in the state. In addition to conducting an annual schedule of competition events, the State Office manages fundraising, public relations, coaches training, volunteer registration, Area & County Programs, outreach and general administration.

## REGIONAL MANAGERS

Regional Managers lead SO Indiana's efforts to increase participation and improve the athlete experience. Growth and quality improvement are accomplished by the development of new County Programs, cultivation and support of existing Area and County Program efforts, and training volunteers who have the biggest impact on the athlete experience. Regional Managers oversee an accreditation process for Area and County Programs that serve as the framework for development of annual plans customized by locality – but with focus on recruitment of new athletes and development of the capacity to support quality growth.

## AREA PROGRAMS

Ten geographic subdivisions of Indiana consisting of seven (7) to 13 counties, Areas are responsible for conducting competitions, Polar Plunges, and support of County Programs. Each Area is run by a committee of volunteers known as the Area Management Team. The Area Director and Area Competition Director oversee the Area Program, which includes regular coaches meetings, sectional competitions, and at least one bowling tournament and one track & field meet a year.

## COUNTY PROGRAMS

County Programs have a committee of volunteers responsible for making a year-round program of sports training and competition available to all eligible athletes within its boundaries. Though usually consisting of one county, some county programs may consist of two (2) or three (3) counties in rural areas or a portion of a county in urban areas. The County Coordinator is the person appointed to oversee the operation of a SO Indiana program.

Persons seeking to recruit and train athletes for Special Olympics competition must submit a *Change of Area/County Leadership Form* to the State Office. Applications are accepted year round. The *Change of Area/County Leadership Form* is located on online version at [www.soindiana.org](http://www.soindiana.org).

With the appointment of a new County Coordinator or new Treasurer, a new *Change of Area/County Leadership Form* must be submitted to the State Office.

The President/CEO of SO Indiana must sign ALL applications, agreements, and permits involving contractual or other financial obligations, including for purchase, leasing, or rental of services or facilities.

If a Program ceases to exist, the County Coordinator is responsible for returning all assets (funds and capital) to the State Office. Assets may be redistributed to the Area or held until a new county organization is formed.

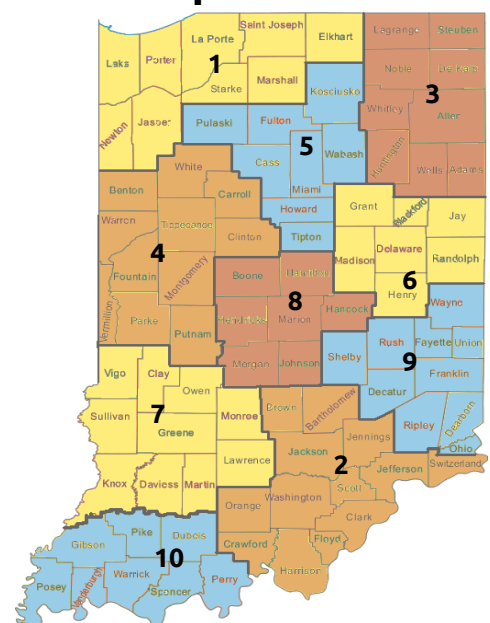
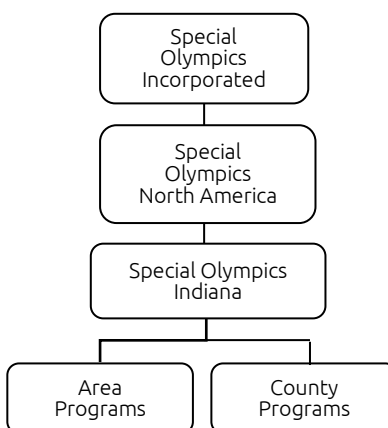
## COUNTY ONLY POLICY

The only Programs that can register, train, and enter athletes in Special Olympics Indiana competition are County Programs. Local Teams must register, train and enter athletes for Special Olympics Indiana competition through a County Program. Local Teams are any school, workshop, group home or family that provides Special Olympics training for its members (students, clients, employees, family member).

## Regional Map



## Area Map



# Fact Sheet



## VISION

Sports will open hearts and minds towards people with intellectual disabilities and create inclusive communities across the state.

## MISSION

Special Olympics provides year round sports training and athletic competition in a variety of Olympic-type sports for children and adults with intellectual disabilities giving them continuing opportunities to develop physical fitness, demonstrate courage, experience joy and participate in a sharing of gifts, skills and friendships with their families, other Special Olympics athletes and the community.

## HISTORY

The first International Special Olympics Games, organized by Eunice Kennedy Shriver and the Chicago Park District, were held at Soldier Field (Chicago) in 1968. Indiana's involvement began with those first Games.

## PARTICIPATION

In 2019, 18,167 children and adults in Indiana trained and competed through County Programs and school programs. To be eligible to compete in Special Olympics, an individual must be eight (8) years of age or older AND have been identified by an agency or professional as having an intellectual disability OR closely related developmental disability. For those under age eight (8), the Unified Champion Schools program is available.

## OUTREACH

Involving more athletes in Special Olympics is the goal of this worldwide effort. Indiana is focusing on the development of community based programs in each Indiana county and the Unified Champion Schools and Champions Together Unified Sports programs to increase the number of athletes.

## VOLUNTEERS

Special Olympics Indiana is an organization that is run almost entirely by volunteers. More than 10,000 volunteers provide the help needed to offer the sports training and competition programs.

## SUPPORT

Special Olympics Indiana is a nonprofit organization funded through private donations and fundraising projects across the state.

## SCHEDULE

Special Olympics Indiana athletes train year round to compete in a variety of local, area, state, national and world competitions. Six (6) state competitions per year highlight this seasonal schedule. Every two (2) years Special Olympics Indiana sends a well trained team to compete in the Special Olympics World Games. These World events alternate between winter and summer sports. In addition, every four (4) years Team Indiana competes in the Special Olympics USA Games.

## PROGRAMS

Special Olympics provides a variety of competition opportunities for athletes of all abilities by offering official events of various degrees of difficulty and challenge. Most Special Olympics events have few differences from the sport played by individuals without disabilities.

### ATHLETE LEADERSHIP

through organized training and practical experiences, Athlete Leadership prepares athletes to undertake meaningful positions of influence and leadership throughout the Special Olympics organization, both on and off the playing field.

### CHAMPIONS TOGETHER

is a collaborative partnership between the Indiana High School Athletic Association (IHSAA) and Special Olympics Indiana that promotes servant leadership among student athletes while changing their lives as well as the lives of those with intellectual disabilities.

#### Program goals include:

- Provide opportunities for inclusive student-led servant leadership as part of the IHSAA experience
- Create awareness and opportunities for inclusion as it relates to all individuals with intellectual disabilities
- Encourage schools to provide opportunities for students to participate in Unified Sports
- Promote fundraising for the purpose of promoting the vision and programs of Special Olympics Indiana and Champions Together

Special Olympics Inc. is supporting Champions Together as a model program to activate schools through "Unified Champion Schools" which also has the endorsement of the National Federation of State High School Associations (NFHS).

### UNIFIED CHAMPION SCHOOLS

is a complementary program of Champions Together. Where Champions Together focuses on high schools, Unified Champion Schools focuses on programming at the pre-school, elementary, and middle school levels. The program is intended to provide proper training and competition opportunities prior to transitioning to the high school Unified Sports programs through Champions Together or Special Olympics participation through the County Program.

### UNIFIED FITNESS CLUBS

are locally organized fitness-focused groups that will give members a way to exercise year-round. The focus is fitness, not competition. Membership is for athletes and partners - Unified!

### UNIFIED SPORTS®

combines persons with and without intellectual disabilities on the same team for training and competition. Indiana is a world leader in the development of Unified Sports® programs in a variety of sports.

## Official Special Olympics Sports

Alpine Skiing\*  
Badminton  
Basketball\*  
Bocce\*  
Bowling\*  
Cricket  
Corn Toss\*  
Cross Country Skiing  
Cycling\*  
Equestrian\*  
Figure Skating\*+  
Flag Football\*  
Floor Hockey  
Floorball  
Golf\*  
Gymnastics\*+  
Handball  
Horseshoes\*  
Judo  
Kayaking  
Motor Activities\*  
Netball  
Open Water Swimming  
Powerlifting\*  
Roller Skating  
Sailing  
Snowboarding\*  
Snowshoeing\*  
Soccer\*  
Softball\*  
Speed Skating\*+  
Swimming\*  
Table Tennis  
Tennis\*+  
Track & Field\*  
Triathlon\*  
Volleyball\*

\*Sports offered in Indiana.

+In Indiana, local sports only.