

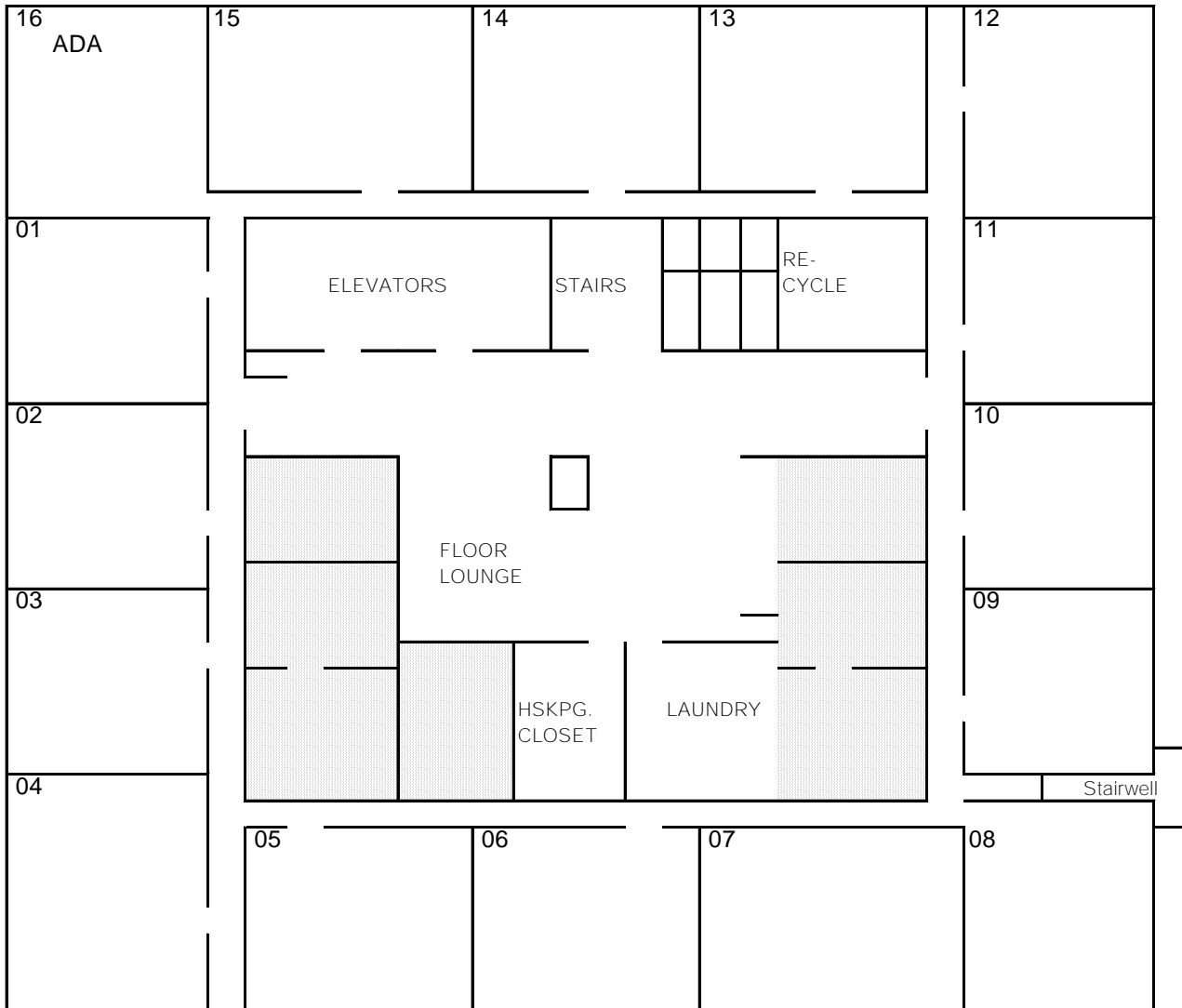
JONES HALL

FLOOR: _____

I.S.O. 2014

(2-10)

S
E + W
N



* NOTE: The "16" room on floors 2 thru 9 are ADA accessible. Rooms 216 & 316 have roll-in shower units.

** NOTE: The "15" and "16" rooms on the 10th floor are the Assistant Director's apartment. DO NOT include these rooms when making conference housing assignments.